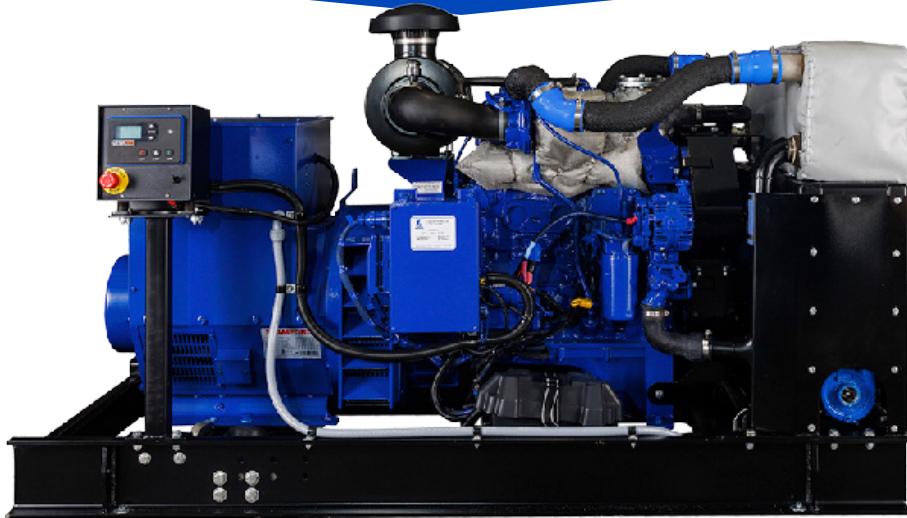


# LPI-F45-65 / LPI-F45-65KC GENERATOR



Engine	N45TE2P
<b>Main Characteristics</b>	
Continuous	65kW
Phase	3 Phase
Frequency [Hz]	60 Hz
Current	225.5/97.7 A
Voltage	208 / 480 V
RPM	1800
Cylinders	4
Control Panel	Dynagen
<b>Cooling System</b>	
Cooling	Liquid
Keel Cooled [BTU/min]	4601
Radiator Cooled	Available

<b>Fuel System</b>		
Fuel	No. 2 Diesel	
Starting System	Electric	
Oil Capacity [US Gal]	3.8	
Fuel Consumption [Gal/hr]	1/2 Load	2.63
	3/4 Load	3.68
	Full Load	4.65
<b>Physical Properties</b>		
Weight (lbs)	2950 lbs	
Dimensions LxWxH (in) (FOOT-PRINT)	82 x 37 x 50	



**LOUISIANA**  
74257 Hwy 25  
Covington, LA 70435  
985.892.0107

**TEXAS**  
905 W 13th St.  
Deer Park, TX 77536  
281.247.8925

**KENTUCKY**  
3885 Industrial Dr.  
Paducah, KY 42001  
270.845.3680



labordeproducts.com