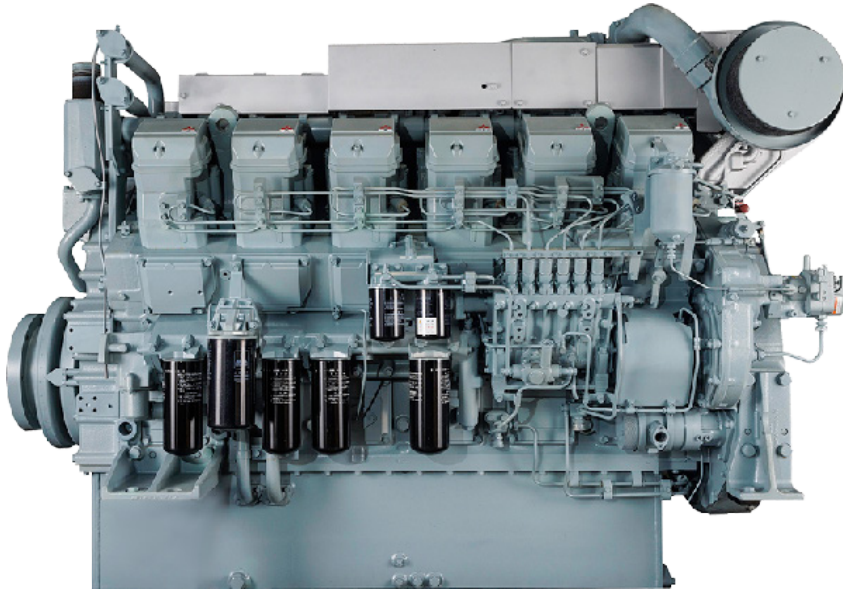


# S12R SERIES



12-cylinder, 4-cycle, mechanical controlled, water cooled, turbocharged, direct injection diesel engine

**BORE/STROKE** 6.7in x 7.1in  
(170mm x 180mm)

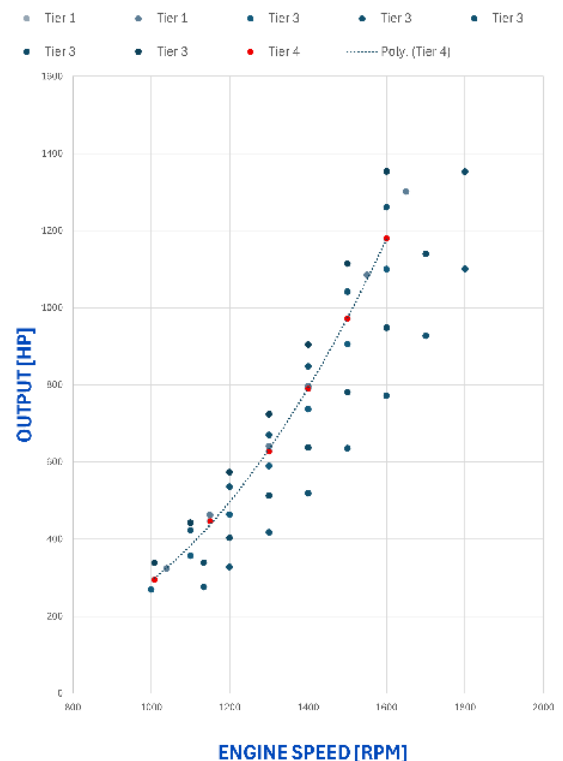
**DISPLACEMENT** 49L  
(2,992 cu in)

**DIMENSIONS** 93.5in (2,376mm) length  
60in (1,512mm) width  
68.1in (1,731mm) height

**WEIGHT (DRY)** 11,729lbs (5,320kg)

**The S12R engine is designed for durability, reliability, and efficiency.**

Laborde Products is a proud distributor for Mitsubishi Marine Engines and is happy to provide the marine markets with a simple and fully mechanical engine. These engines were constructed with superior engineering to maintain the mechanical nature of its design and a commitment to keeping the power in the US mariners' hands, not the computers.



**LOUISIANA**  
74257 Hwy 25  
Covington, LA 70435  
985.892.0107

**TEXAS**  
905 W 13th St.  
Deer Park, TX 77536  
281.247.8925

**KENTUCKY**  
3885 Industrial Dr.  
Paducah, KY 42001  
270.845.3680



labordeproducts.com

# S12R SERIES

## S12R-Y1MPTA

TIER 1 REPLACEMENT  
1180 HP @ 1600rpm

Load	Speed [rpm]	Output [hp]	Torque [lb.ft]	Fuel Consumption [gal/h]
100%	1600	1180	3874	59
82%	1500	972	3403	48
67%	1400	791	2967	40
53%	1300	628	2537	32
38%	1150	447	2041	24
25%	1008	295	1537	16

Average Fuel Consumption on ISO 8178 Cycle, Mode E3 : 41.2 gal/h, 156.0 l/h

## S12R-Y1MPTA

TIER 1 REPLACEMENT  
1300 HP @ 1650rpm

Load	Speed [rpm]	Output [hp]	Torque [lb.ft]	Fuel Consumption [gal/h]
100%	1650	1301	4141	64
83%	1550	1085	3677	53
61%	1400	796	2987	39
49%	1300	641	2589	32
36%	1150	463	2114	24
25%	1039	325	1640	17

Average Fuel Consumption on ISO 8178 Cycle, Mode E3 : 44.6 gal/h, 168.8 l/h

## S12R-Y3MPTAW-6

TIER 3 REPLACEMENT  
1100 HP @ 1800rpm

Load	Speed [rpm]	Output [hp]	Torque [lb.ft]	Fuel Consumption [gal/h]
100%	1800	1099	3212	62
84%	1700	926	2864	49
70%	1600	770	2534	40
58%	1500	634	2226	32
47%	1400	519	1947	26
39%	1300	424	1688	21
30%	1200	335	1436	17
25%	1134	274	1279	14

Average Fuel Consumption on ISO 8178 Cycle, Mode E3 : 38.6 gal/h, 146.3 l/h

## S12R-Y3MPTAW-4

TIER 3 REPLACEMENT  
1100 HP @ 1600rpm

Load	Speed [rpm]	Output [hp]	Torque [lb.ft]	Fuel Consumption [gal/h]
100%	1600	1099	3614	56
82%	1500	905	3175	44
67%	1400	734	2761	35
54%	1300	588	2382	28
43%	1200	470	2044	22
33%	1100	368	1721	18
25%	1008	274	1438	13

Average Fuel Consumption on ISO 8178 Cycle, Mode E3 : 38.6 gal/h, 146.3 l/h

## S12R-Y3MPTAW-3

TIER 3 REPLACEMENT  
1260 HP @ 1600rpm

Load	Speed [rpm]	Output [hp]	Torque [lb.ft]	Fuel Consumption [gal/h]
100%	1600	1255	4145	68
82%	1500	1034	3642	51
67%	1400	839	3167	40
54%	1300	672	2732	32
43%	1200	537	2345	25
33%	1100	420	1974	20
25%	1000	313	1647	15

Average Fuel Consumption on ISO 8178 Cycle, Mode E3 : 44.6 gal/h, 168.8 l/h

## S12R-Y3MPTAW-5

TIER 3 REPLACEMENT  
1350 HP @ 1800rpm

Load	Speed [rpm]	Output [hp]	Torque [lb.ft]	Fuel Consumption [gal/h]
100%	1800	1354	3947	73
84%	1700	1141	3520	59
70%	1600	949	3113	48
58%	1500	781	2735	39
47%	1400	639	2392	31
39%	1300	522	2074	26
30%	1200	412	1765	20
25%	1134	338	1573	17

Average Fuel Consumption on ISO 8178 Cycle, Mode E3 : 41.7 gal/h, 157.9 l/h

## S12R-Y3MPTAW-7

TIER 3 REPLACEMENT  
1350 HP @ 1600rpm

Load	Speed [rpm]	Output [hp]	Torque [lb.ft]	Fuel Consumption [gal/h]
100%	1600	1354	4442	72
82%	1500	1115	3902	56
67%	1400	905	3393	44
54%	1300	725	2926	35
43%	1200	579	2512	28
33%	1100	453	2115	22
25%	1008	338	1765	16

Average Fuel Consumption on ISO 8178 Cycle, Mode E3 : 38.6 gal/h, 146.3 l/h

## S12R-Y4MPTAW-3

TIER 4 REPLACEMENT  
1260 HP @ 1600rpm

Load	Speed [rpm]	Output [hp]	Torque [lb.ft]	Fuel Consumption [gal/h]
100%	1600	1260	4138	63
83%	1500	1041	3646	50
67%	1400	848	3181	40
53%	1300	671	2709	31
43%	1200	536	2348	25
34%	1100	423	2019	20

Average Fuel Consumption on ISO 8178 Cycle, Mode E3 : 42.2 gal/h, 159.7 l/h



**LOUISIANA**  
74257 Hwy 25  
Covington, LA 70435  
985.892.0107

**TEXAS**  
905 W 13th St.  
Deer Park, TX 77536  
281.247.8925

**KENTUCKY**  
3885 Industrial Dr.  
Paducah, KY 42001  
270.845.3680



labordeproducts.com