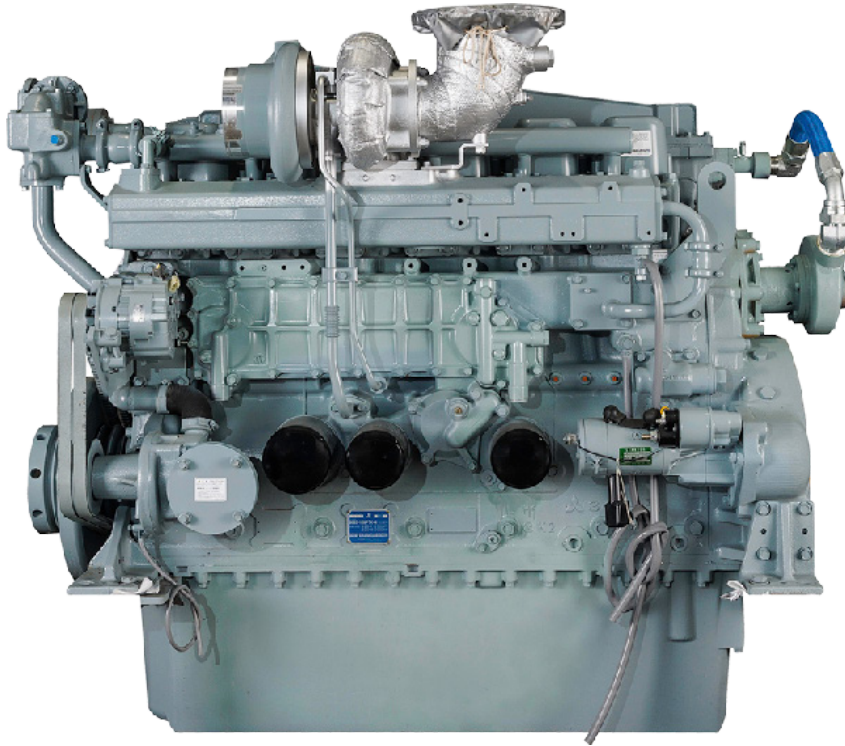


S6B3 SERIES



6-cylinder, 4-cycle, mechanical controlled, water cooled, turbocharged, direct injection diesel engine

BORE/STROKE 5.3in x 6.7in
(135mm x 170mm)

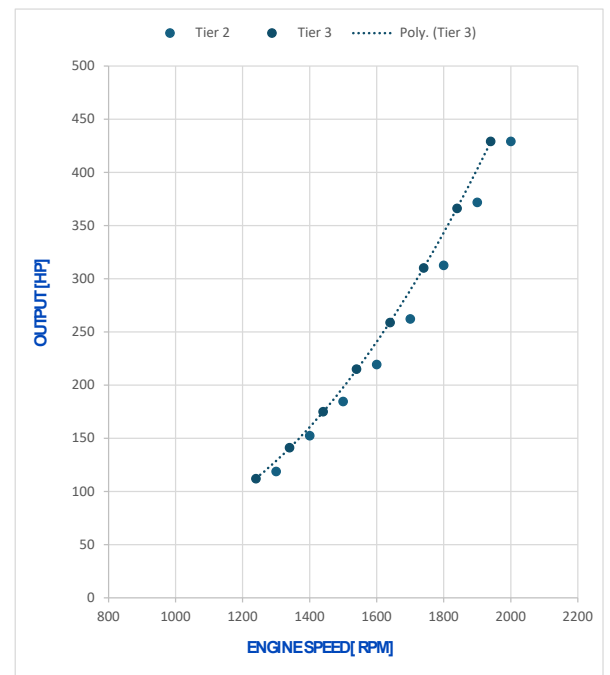
DISPLACEMENT 14.6L
(891 cu in)

DIMENSIONS 61in (1,539mm) length
37in (939mm) width
52in (1,330mm) height

WEIGHT (DRY) 2,888lbs (1,310kg)

The S6B3 engine is designed for durability, reliability, and efficiency.

Laborde Products is a proud distributor for Mitsubishi Marine Engines and is happy to provide the marine markets with a simple and fully mechanical engine. These engines were constructed with superior engineering to maintain the mechanical nature of its design and a commitment to keeping the power in the US mariners' hands, not the computers.



LOUISIANA
74257 Hwy 25
Covington, LA 70435
985.892.0107

TEXAS
905 W 13th St.
Deer Park, TX 77536
281.247.8925

KENTUCKY
3885 Industrial Dr.
Paducah, KY 42001
270.845.3680



labordeproducts.com

S6B3 SERIES

S6B3-Y2MPTK-4

Tier 2 Replacement
429hp @ 2000rpm

Load	Speed [rpm]	Output [hp]	Torque [lb.ft]	Fuel Consumption [gal/h]
100%	2000	429	1127	24
87%	1900	372	1028	20
73%	1800	312	912	16
61%	1700	262	810	13
51%	1600	219	720	11
43%	1500	184	646	9
36%	1400	152	572	7
28%	1300	119	480	6

Average Fuel Consumption on ISO 8178 Cycle, Mode E3 : 15.9 gal/h, 60.0 l/h

S6B3-Y3MPTAW-2

Tier 3
429hp @ 1940rpm

Load	Speed [rpm]	Output [hp]	Torque [lb.ft]	Fuel Consumption [gal/h]
100%	1940	429	1162	24
85%	1840	366	1045	19
72%	1740	310	936	16
60%	1640	259	829	13
50%	1540	215	733	11
41%	1440	175	638	9
33%	1340	141	553	7
26%	1240	112	474	5

Average Fuel Consumption on ISO 8178 Cycle, Mode E3 : 15.9 gal/h, 60.2 l/h

