

S6R SERIES

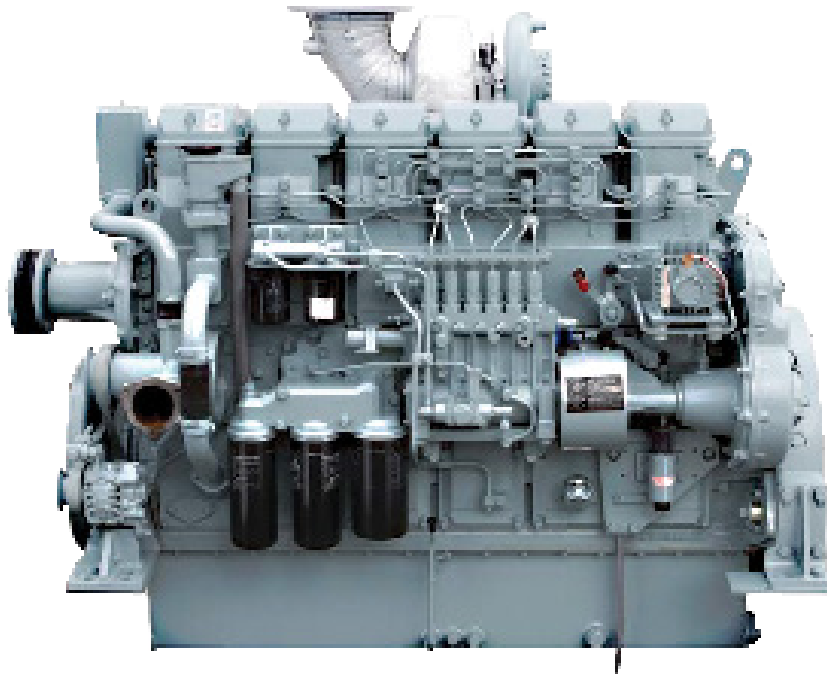
6-cylinder, 4-cycle, mechanical controlled, water cooled, turbocharged, direct injection diesel engine

BORE/STROKE 6.7in x 7.1in
(170mm x 180mm)

DISPLACEMENT 24.51L
(1,496 cu in)

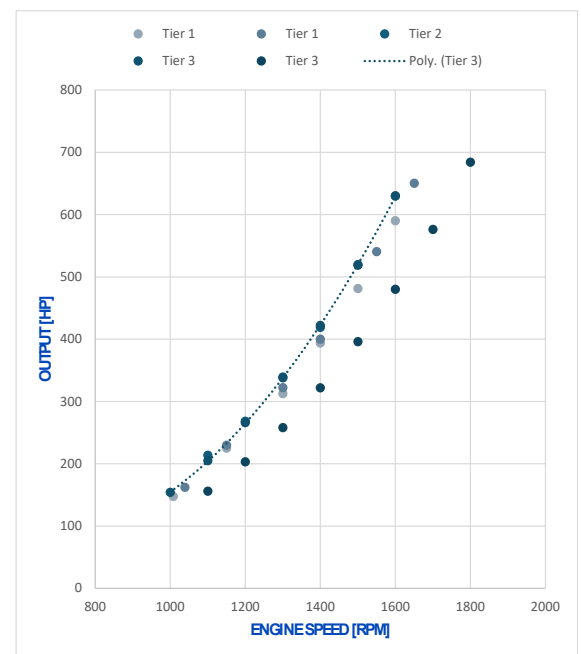
DIMENSIONS 71in (1,811mm) length
44in (1,108mm) width
64in (1,614mm) height

WEIGHT (DRY) 6,239lbs (2,830kg)



The S6R engine is designed for durability, reliability, and efficiency.

Laborde Products is a proud distributor for Mitsubishi Marine Engines and is happy to provide the marine markets with a simple and fully mechanical engine. These engines were constructed with superior engineering to maintain the mechanical nature of its design and a commitment to keeping the power in the US mariners' hands, not the computers.



LOUISIANA
74257 Hwy 25
Covington, LA 70435
985.892.0107

TEXAS
905 W 13th St.
Deer Park, TX 77536
281.247.8925

KENTUCKY
3885 Industrial Dr.
Paducah, KY 42001
270.845.3680



labordeproducts.com

S6R-Y1MPTAW-3

Tier 1 Replacement
590 HP @ 1600 RPM

Load	Speed [rpm]	Output [hp]	Torque [lb.ft]	Fuel Consumption [gal/h]
100%	1650	650	2070	33
83%	1550	541	1832	27
62%	1400	400	1501	20
50%	1300	322	1302	16
35%	1150	230	1049	12
25%	1039	162	820	8

Average Fuel Consumption on ISO 8178 Cycle, Mode E3 : 22.6 gal/h, 85.5 l/h

S6R-Y1MPTA-2

Tier 1 Replacement
650HP @ 1650RPM

Load	Speed [rpm]	Output [hp]	Torque [lb.ft]	Fuel Consumption [gal/h]
100%	1650	650	2070	33
83%	1550	541	1832	27
62%	1400	400	1501	20
50%	1300	322	1302	16
35%	1150	230	1049	12
25%	1039	162	820	8

Average Fuel Consumption on ISO 8178 Cycle, Mode E3 : 22.6 gal/h, 85.5 l/h

S6R-Y2MPTK-3

Tier 2 Replacement
630 HP @ 1600 RPM

Load	Speed [rpm]	Output [hp]	Torque [lb.ft]	Fuel Consumption [gal/h]
100%	1600	650	2070	33
82%	1500	541	1832	27
66%	1400	400	1501	20
54%	1300	322	1302	16
43%	1200	230	1049	12
34%	1100	162	820	8

Average Fuel Consumption on ISO 8178 Cycle, Mode E3 : 21.9 gal/h, 82.9 l/h

S6R-Y3MPTAW-4

Tier 3
630 HP @ 1600 RPM

Load	Speed [rpm]	Output [hp]	Torque [lb.ft]	Fuel Consumption [gal/h]
100%	1600	630	2068	33
82%	1500	519	1817	26
67%	1400	422	1583	21
54%	1300	338	1366	16
42%	1200	266	1164	13
33%	1100	205	979	10
24%	1000	154	809	7

Average Fuel Consumption on ISO 8178 Cycle, Mode E3 : 22.2 gal/h, 83.9 l/h

S6R-Y3MPTAW-1

Tier 3
684hp @ 1800rpm

Load	Speed [rpm]	Output [hp]	Torque [lb.ft]	Fuel Consumption [gal/h]
100%	1800	684	1996	38
84%	1700	576	1780	30
70%	1600	480	1576	25
58%	1500	396	1387	20
47%	1400	322	1208	16
38%	1300	258	1042	13
30%	1200	203	889	10
23%	1100	156	745	8

Average Fuel Consumption on ISO 8178 Cycle, Mode E3 : 25.0 gal/h, 94.7 l/h

