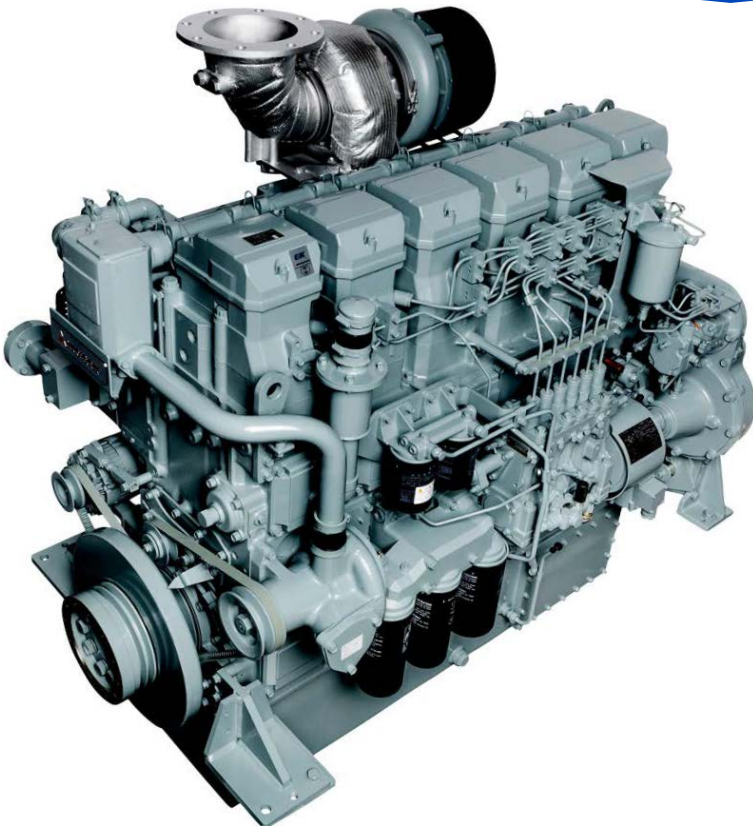


# S6R2 SERIES



6-cylinder, 4-cycle, mechanical controlled, water cooled, turbocharged, direct injection diesel engine

**BORE/STROKE** 6.7in x 8.7in  
(170mm x 220mm)

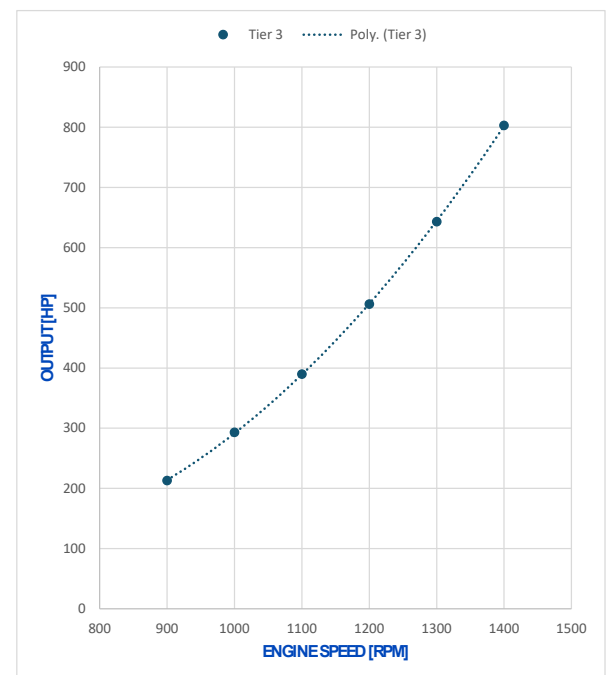
**DISPLACEMENT** 29.96L  
(1,496 cu in)

**DIMENSIONS** 71.3in (1,811mm) length  
43.6in (1,108mm) width  
63.5in (1,614mm) height

**WEIGHT (DRY)** 6,393lbs (2,900kg)

**The S6R2 engine is designed for durability, reliability, and efficiency.**

Laborde Products is a proud distributor for Mitsubishi Marine Engines and is happy to provide the marine markets with a simple and fully mechanical engine. These engines were constructed with superior engineering to maintain the mechanical nature of its design and a commitment to keeping the power in the US mariners' hands, not the computers.



**LOUISIANA**  
74257 Hwy 25  
Covington, LA 70435  
985.892.0107

**TEXAS**  
905 W 13th St.  
Deer Park, TX 77536  
281.247.8925

**KENTUCKY**  
3885 Industrial Dr.  
Paducah, KY 42001  
270.845.3680



labordeproducts.com

# S6R2 SERIES

## S6R2-Y3MPTAW

TIER 3

803 HP @ 1400 RPM

Load	Speed [rpm]	Output [hp]	Torque [lb.ft]	Fuel Consumption [gal/h]
100%	1400	803	3013	43
80%	1300	643	2598	32
63%	1200	506	2215	25
49%	1100	390	1862	19
36%	1000	293	1539	14
27%	900	213	1243	10

Average Fuel Consumption on ISO 8178 Cycle, Mode E3 : 28.4 gal/h, 107.5 l/h



**LOUISIANA**  
74257 Hwy 25  
Covington, LA 70435  
985.892.0107

**TEXAS**  
905 W 13th St.  
Deer Park, TX 77536  
281.247.8925

**KENTUCKY**  
3885 Industrial Dr.  
Paducah, KY 42001  
270.845.3680



labordeproducts.com