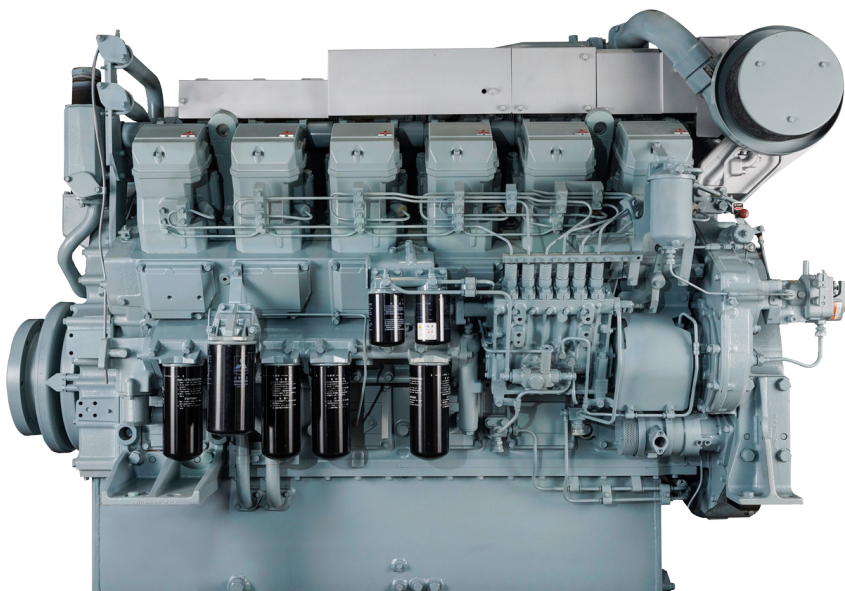


S12A2 SERIES



12-cylinder, 4-cycle, mechanical controlled, water cooled, turbocharged, direct injection diesel engine

BORE/STROKE 5.9in x 6.3in
(150mm x 160mm)

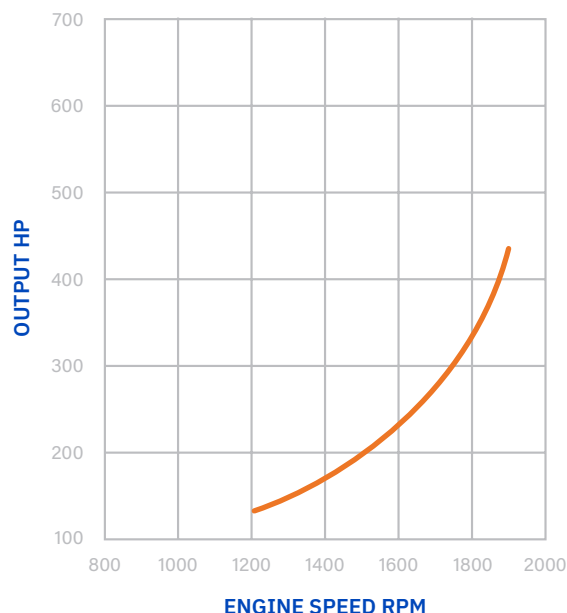
DISPLACEMENT 33.93L
(2,071 cu in)

DIMENSIONS 90.2in (2,290mm) length
56.6in (1,436mm) width
64in (1,618.5mm) height

WEIGHT (DRY) 7,452lbs (3,380kg)

The S12A2 engine is designed for durability and reliability.

Laborde Products is a proud distributor for Mitsubishi Marine Engines and is happy to provide the marine markets with a simple and fully mechanical engine. These engines were constructed with superior engineering to maintain the mechanical nature of its design and a commitment to keeping the power in the US mariners' hands, not the computers.



LOUISIANA
74257 Highway 25
Covington, LA 70435
985-892-0107

TEXAS
905 W 13th Street
Deer Park, TX 77536
281-247-8925

KENTUCKY
3000 Irvin Cobb Drive
Paducah, KY 42003
270-845-3680



labordeproducts.com

S12A2 SERIES

S12A2-Y1MPTA-3

TIER 1 REPLACEMENT

850hp @ 1940rpm

LOAD	Speed [rpm]	Output		Torque		Fuel Consumption	
		[kW]	[hp]	[lb.ft]	[N.m]	[l/h]	[gal/h]
100%	1940	634	850	2302	3121	163	43
80%	1800	509	683	1992	2701	129	34
62%	1650	391	524	1669	2262	100	26
46%	1500	291	390	1366	1852	76	20
34%	1350	218	293	1138	1543	59	15
25%	1222	159	213	916	1243	44	11

Average Fuel Consumption on ISO 8178 Cycle, Mode E3 : 29.5 gal/h, 111.7 l/h

S12A2-Y2MPTK-3

TIER 2 REPLACEMENT

940hp @ 1940rpm

LOAD	Speed [rpm]	Output		Torque		Fuel Consumption	
		[kW]	[hp]	[lb.ft]	[N.m]	[l/h]	[gal/h]
100%	1940	701	940	2545	3451	185	48
80%	1800	558	748	2183	2960	142	37
62%	1650	432	579	1842	2498	107	28
47%	1500	326	438	1532	2077	80	21
39%	1400	271	363	1364	1849	67	17
27%	1250	189	254	1068	1447	48	12

Average Fuel Consumption on ISO 8178 Cycle, Mode E3 : 32.5 gal/h, 123.0 l/h



LOUISIANA
74257 Highway 25
Covington, LA 70435
985-892-0107

TEXAS
905 W 13th Street
Deer Park, TX 77536
281-247-8925

KENTUCKY
3000 Irvin Cobb Drive
Paducah, KY 42003
270-845-3680



labordeproducts.com