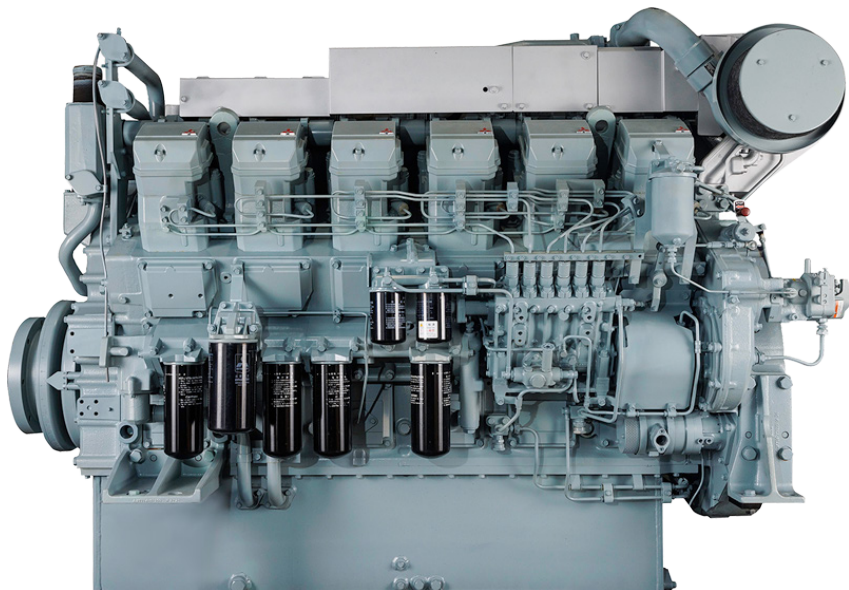


# S12R SERIES



12-cylinder, 4-cycle, mechanical controlled, water cooled, turbocharged, direct injection diesel engine

**BORE/STROKE** 6.7in x 7.1in  
(170mm x 180mm)

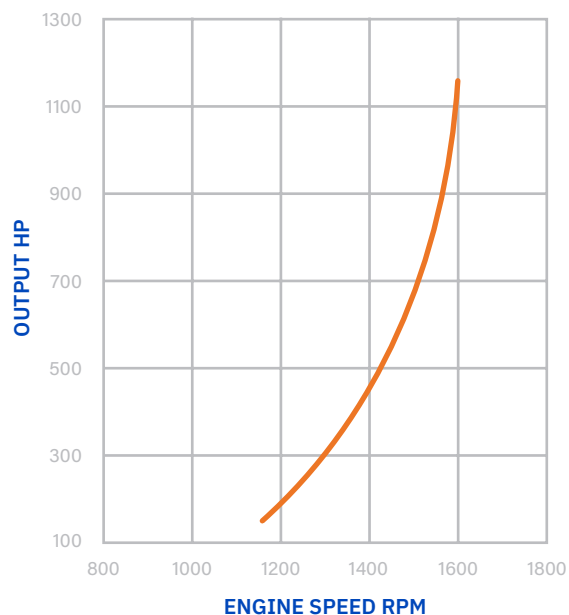
**DISPLACEMENT** 49L  
(2,992 cu in)

**DIMENSIONS** 93.5in (2,376mm) length  
60in (1,512mm) width  
68.1in (1,731mm) height

**WEIGHT (DRY)** 11,729lbs (5,320kg)

**The S12R engine is designed for durability, reliability, and efficiency.**

Laborde Products is a proud distributor for Mitsubishi Marine Engines and is happy to provide the marine markets with a simple and fully mechanical engine. These engines were constructed with superior engineering to maintain the mechanical nature of its design and a commitment to keeping the power in the US mariners' hands, not the computers.



**LOUISIANA**  
74257 Highway 25  
Covington, LA 70435  
985-892-0107

**TEXAS**  
905 W 13th Street  
Deer Park, TX 77536  
281-247-8925

**KENTUCKY**  
3000 Irvin Cobb Drive  
Paducah, KY 42003  
270-845-3680



[labordeproducts.com](http://labordeproducts.com)

# S12R SERIES

## S12R-Y1MPTA

TIER 1 REPLACEMENT  
1180 HP @ 1600rpm

| LOAD | Speed<br>[rpm] | Output |      | Torque  |       | Fuel Consumption |         |
|------|----------------|--------|------|---------|-------|------------------|---------|
|      |                | [kW]   | [hp] | [lb.ft] | [N.m] | [l/h]            | [gal/h] |
| 100% | 1600           | 880    | 1180 | 3874    | 5252  | 224              | 59      |
| 82%  | 1500           | 725    | 972  | 3403    | 4614  | 185              | 48      |
| 67%  | 1400           | 590    | 791  | 2967    | 4023  | 151              | 40      |
| 53%  | 1300           | 468    | 628  | 2537    | 3440  | 123              | 32      |
| 38%  | 1150           | 333    | 447  | 2041    | 2768  | 92               | 24      |
| 25%  | 1008           | 220    | 295  | 1537    | 2084  | 64               | 16      |

Average Fuel Consumption on ISO 8178 Cycle, Mode E3 : 41.2 gal/h, 156.0 l/h

## S12R-Y2MPTK-3

TIER 2 REPLACEMENT  
1260 HP @ 1600 RPM

| LOAD | Speed<br>[rpm] | Output |      | Torque  |       | Fuel Consumption |         |
|------|----------------|--------|------|---------|-------|------------------|---------|
|      |                | [kW]   | [hp] | [lb.ft] | [N.m] | [l/h]            | [gal/h] |
| 100% | 1600           | 940    | 1260 | 4138    | 5610  | 252              | 66      |
| 82%  | 1500           | 773    | 1037 | 3631    | 4923  | 200              | 52      |
| 67%  | 1400           | 633    | 849  | 3186    | 4320  | 161              | 42      |
| 54%  | 1300           | 503    | 675  | 2727    | 3697  | 127              | 33      |
| 43%  | 1200           | 400    | 536  | 2348    | 3183  | 101              | 26      |
| 34%  | 1100           | 316    | 424  | 2023    | 2743  | 81               | 21      |

Average Fuel Consumption on ISO 8178 Cycle, Mode E3 : 44.3 gal/h, 167.6 l/h

## S12R-Y3MPTAW-4

TIER 3 REPLACEMENT  
1100hp @ 1600 or 1800

| LOAD | Speed<br>[rpm] | Output |      | Torque  |       | Fuel Consumption |         |
|------|----------------|--------|------|---------|-------|------------------|---------|
|      |                | [kW]   | [hp] | [lb.ft] | [N.m] | [l/h]            | [gal/h] |
| 100% | 1600           | 820    | 1100 | 3611    | 4896  | 221              | 58      |
| 82%  | 1500           | 676    | 906  | 3172    | 4301  | 174              | 46      |
| 67%  | 1400           | 550    | 737  | 2765    | 3749  | 138              | 36      |
| 54%  | 1300           | 440    | 590  | 2384    | 3232  | 110              | 29      |
| 42%  | 1200           | 346    | 464  | 2031    | 2753  | 87               | 23      |
| 32%  | 1100           | 266    | 357  | 1705    | 2311  | 68               | 18      |
| 24%  | 1000           | 201    | 269  | 1413    | 1916  | 51               | 13      |

Average Fuel Consumption on ISO 8178 Cycle, Mode E3 : 38.6 gal/h, 146.3 l/h

## S12R-Y3MPTAW-3

TIER 3 REPLACEMENT  
1260hp @ 1600rpm

| LOAD | Speed<br>[rpm] | Output |      | Torque  |       | Fuel Consumption |         |
|------|----------------|--------|------|---------|-------|------------------|---------|
|      |                | [kW]   | [hp] | [lb.ft] | [N.m] | [l/h]            | [gal/h] |
| 100% | 1600           | 940    | 1260 | 4138    | 5610  | 239              | 63      |
| 83%  | 1500           | 776    | 1041 | 3646    | 4943  | 192              | 50      |
| 67%  | 1400           | 632    | 848  | 3181    | 4313  | 153              | 40      |
| 53%  | 1300           | 500    | 671  | 2709    | 3673  | 120              | 31      |
| 43%  | 1200           | 400    | 536  | 2348    | 3183  | 97               | 25      |
| 34%  | 1100           | 315    | 423  | 2019    | 2737  | 77               | 20      |

Average Fuel Consumption on ISO 8178 Cycle, Mode E3 : 42.2 gal/h, 159.7 l/h



**LOUISIANA**  
74257 Highway 25  
Covington, LA 70435  
985-892-0107

**TEXAS**  
905 W 13th Street  
Deer Park, TX 77536  
281-247-8925

**KENTUCKY**  
3000 Irvin Cobb Drive  
Paducah, KY 42003  
270-845-3680



labordeproducts.com