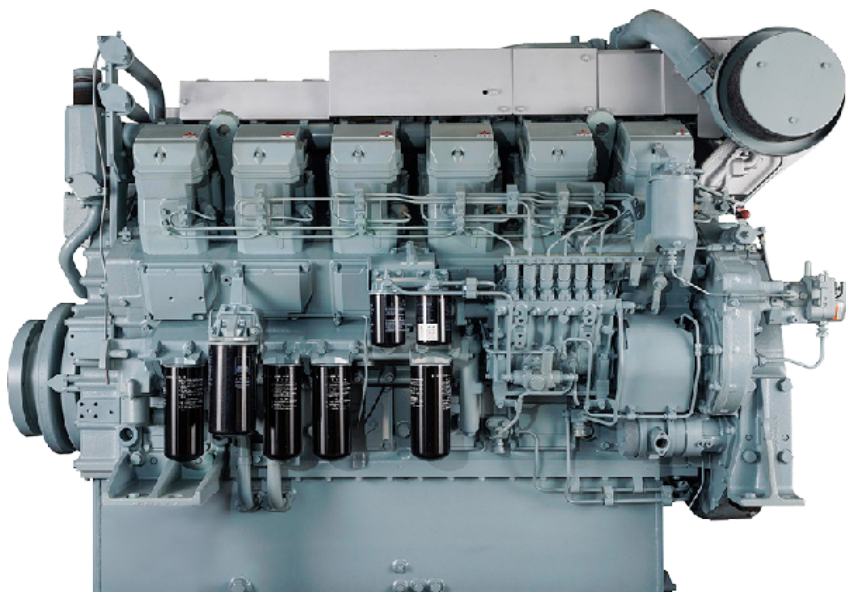


# S12R-Y4MPTAW-3



12-cylinder, 4-cycle, mechanical controlled, water cooled, turbocharged, direct injection diesel engine

**BORE/STROKE** 6.7in x 7.1in  
(170mm x 180mm)

**DISPLACEMENT** 49L  
(2,992 cu in)

**DIMENSIONS** 93.5in (2,376mm) length  
60in (1,512mm) width  
68.1in (1,731mm) height

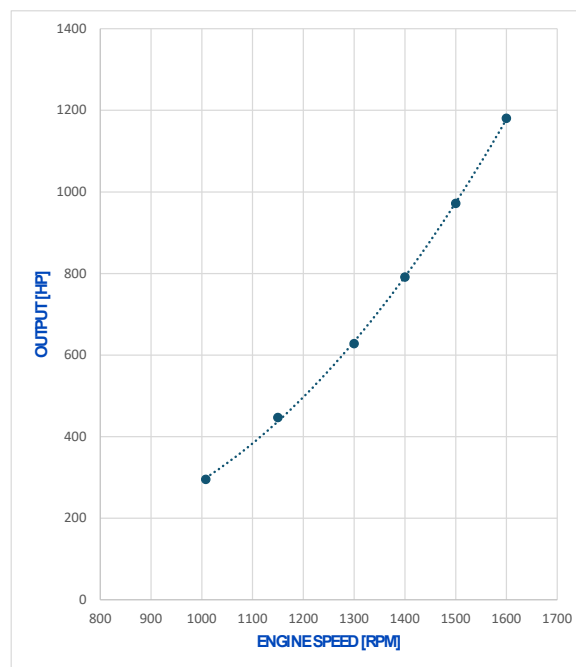
**WEIGHT (DRY)** 11,795lbs (5,350kg)

**The S12R engine is designed for durability, reliability, and efficiency.**

Laborde Products is a proud distributor for Mitsubishi Marine Engines and is happy to provide the marine markets with a simple and fully mechanical engine. These engines were constructed with superior engineering to maintain the mechanical nature of its design and a commitment to keeping the power in the US mariners' hands, not the computers.

Load	Speed [rpm]	Output [hp]	Torque [lb.ft]	Fuel Consumption [gal/h]
100%	1600	1260	4138	63
83%	1500	1041	3646	50
67%	1400	848	3181	40
53%	1300	671	2709	31
43%	1200	536	2348	25
34%	1100	423	2019	20

Average Fuel Consumption on ISO 8178 Cycle, Mode E3 : 42.2 gal/h, 159.7 l/h



## S12R-Y4MPTAW-3

TIER 4

1260 HP @ 1600rpm



**LOUISIANA**  
74257 Hwy 25  
Covington, LA 70435  
985.892.0107

**TEXAS**  
905 W 13th St.  
Deer Park, TX 77536  
281.247.8925

**KENTUCKY**  
3885 Industrial Dr.  
Paducah, KY 42001  
270.845.3680



[labordeproducts.com](http://labordeproducts.com)

# S12R-Y4MPTAW-3

## S12R-Y4MPTAW-3

TIER 4

1260 HP @ 1600rpm

Load	Speed [rpm]	Output [hp]	Torque [lb.ft]	Fuel Consumption [gal/h]
100%	1600	1260	4138	63
83%	1500	1041	3646	50
67%	1400	848	3181	40
53%	1300	671	2709	31
43%	1200	536	2348	25
34%	1100	423	2019	20

Average Fuel Consumption on ISO 8178 Cycle, Mode E3 : 42.2 gal/h, 159.7 l/h



**LOUISIANA**  
74257 Hwy 25  
Covington, LA 70435  
985.892.0107

**TEXAS**  
905 W 13th St.  
Deer Park, TX 77536  
281.247.8925

**KENTUCKY**  
3885 Industrial Dr.  
Paducah, KY 42001  
270.845.3680



[labordeproducts.com](http://labordeproducts.com)