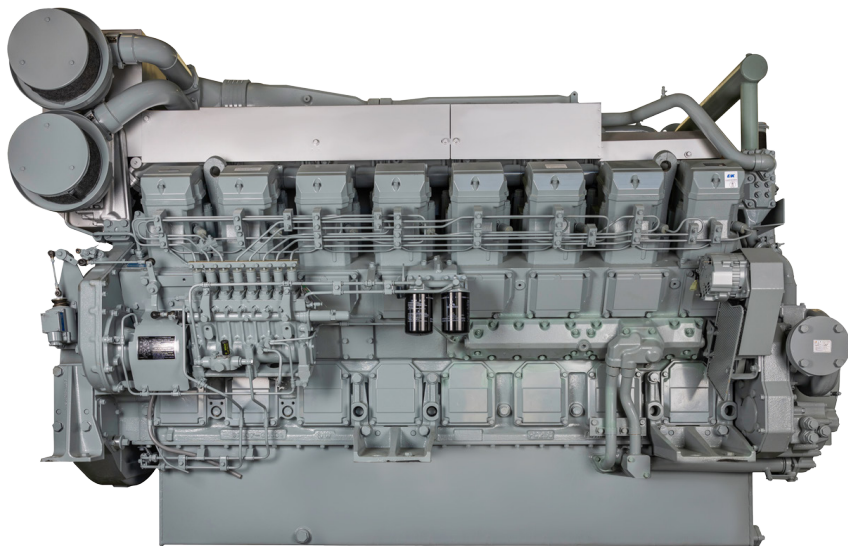


# S16R SERIES



16-cylinder, 4-cycle, mechanical controlled, water cooled, turbocharged, direct injection diesel engine

**BORE/STROKE** 6.7in x 7.1in  
(170mm x 180mm)

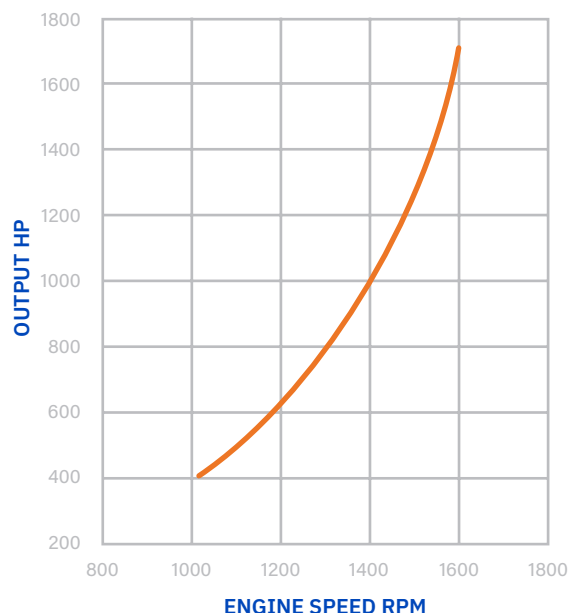
**DISPLACEMENT** 65.37L  
(3,989 cu in)

**DIMENSIONS** 115.4in (2,391mm) length  
60in (1,512mm) width  
77.2in (1,960mm) height

**WEIGHT (DRY)** 14,947.3lbs (6,780kg)

**The S16R engine is designed for durability, reliability, and efficiency.**

Laborde Products is a proud distributor for Mitsubishi Marine Engines and is happy to provide the marine markets with a simple and fully mechanical engine. These engines were constructed with superior engineering to maintain the mechanical nature of its design and a commitment to keeping the power in the US mariners' hands, not the computers.



**LOUISIANA**  
74257 Highway 25  
Covington, LA 70435  
985-892-0107

**TEXAS**  
905 W 13th Street  
Deer Park, TX 77536  
281-247-8925

**KENTUCKY**  
3000 Irvin Cobb Drive  
Paducah, KY 42003  
270-845-3680



[labordeproducts.com](http://labordeproducts.com)

# S16R SERIES

## S16R-Y1MPTA

TIER 1 REPLACEMENT

1568 HP @ 1600rpm

LOAD	Speed [rpm]	Output		Torque		Fuel Consumption	
		[kW]	[hp]	[lb.ft]	[N.m]	[l/h]	[gal/h]
100%	1600	1170	1569	5150	6983	296	78
82%	1500	960	1287	4507	6111	240	63
67%	1400	780	1045	3922	5318	195	51
53%	1300	624	836	3379	4581	158	41
38%	1150	441	591	2699	3659	114	30
25%	1008	293	393	2047	2776	78	20

Average Fuel Consumption on ISO 8178 Cycle, Mode E3 : 53.5 gal/h, 202.4 l/h

## S16R-Y3MPTAW

TIER 3 REPLACEMENT

1675 HP @ 1600 RPM

LOAD	Speed [rpm]	Output		Torque		Fuel Consumption	
		[kW]	[hp]	[lb.ft]	[N.m]	[l/h]	[gal/h]
100%	1600	1251	1677	5525	7490	336	89
83%	1500	1033	1386	4859	6587	265	70
67%	1400	837	1122	4222	5725	208	55
54%	1300	670	899	3648	4945	164	43
43%	1200	537	721	3125	4237	131	35
33%	1100	417	560	2639	3579	101	27
25%	1008	314	421	2189	2968	79	20

Average Fuel Consumption on ISO 8178 Cycle, Mode E3 : 60.4 gal/h, 228.7 l/h



**LOUISIANA**  
74257 Highway 25  
Covington, LA 70435  
985-892-0107

**TEXAS**  
905 W 13th Street  
Deer Park, TX 77536  
281-247-8925

**KENTUCKY**  
3000 Irvin Cobb Drive  
Paducah, KY 42003  
270-845-3680



labordeproducts.com