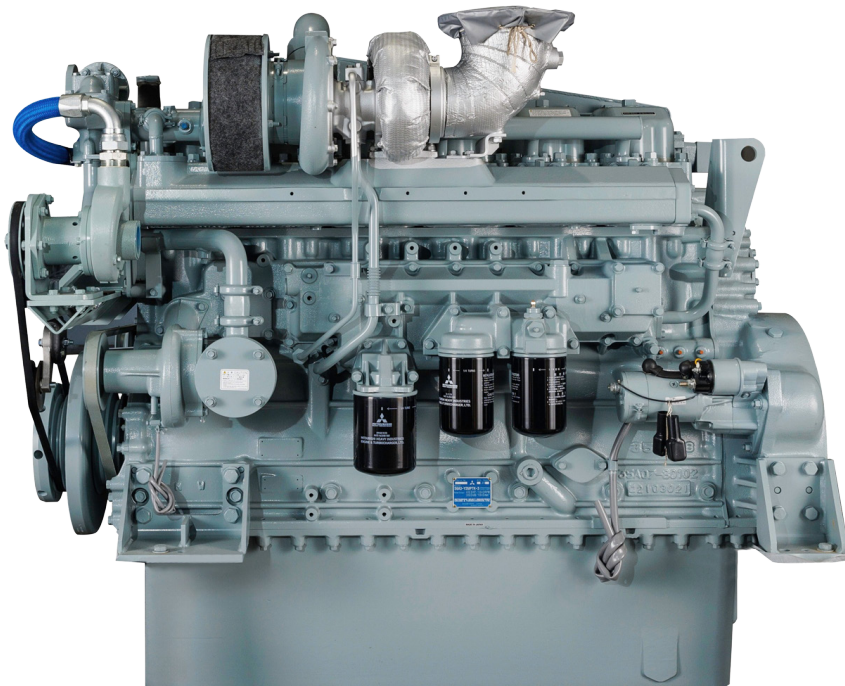


S6A3 SERIES



6-cylinder, 4-cycle, mechanical controlled, water cooled, turbocharged, direct injection diesel engine

BORE/STROKE 5.9in x 6.9in
(150mm x 175mm)

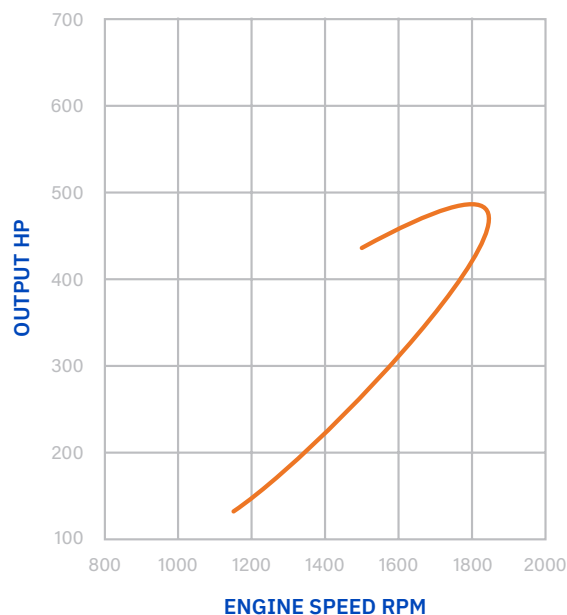
DISPLACEMENT 18.56L
(1,133 cu in)

DIMENSIONS 64.4in (1,636mm) length
36.5in (927mm) width
54in (1,371mm) height

WEIGHT (DRY) 4,189lbs (1,900kg)

The S6A3 engine is designed for durability, reliability, and efficiency.

Laborde Products is a proud distributor for Mitsubishi Marine Engines and is happy to provide the marine markets with a simple and fully mechanical engine. These engines were constructed with superior engineering to maintain the mechanical nature of its design and a commitment to keeping the power in the US mariners' hands, not the computers.



LOUISIANA
74257 Highway 25
Covington, LA 70435
985-892-0107

TEXAS
905 W 13th Street
Deer Park, TX 77536
281-247-8925

KENTUCKY
3000 Irvin Cobb Drive
Paducah, KY 42003
270-845-3680



labordeproducts.com

S6A3 SERIES

S6A3-Y1MPTA

TIER 1 REPLACEMENT

483hp @ 1840rpm

LOAD	Speed [rpm]	Output		Torque		Fuel Consumption	
		[kW]	[hp]	[lb.ft]	[N.m]	[l/h]	[gal/h]
100%	1840	360	483	1378	1868	97	25
86%	1750	310	416	1248	1692	83	21
66%	1600	236	317	1041	1411	64	16
49%	1450	178	238	863	1170	49	13
37%	1300	131	176	712	966	37	9
25%	1159	90	121	547	742	26	6

Average Fuel Consumption on ISO 8178 Cycle, Mode E3 : 20.5 gal/h, 77.5 l/h

S6A3-Y1MPTA

TIER 1 REPLACEMENT

529hp @ 1900rpm

LOAD	Speed [rpm]	Output		Torque		Fuel Consumption	
		[kW]	[hp]	[lb.ft]	[N.m]	[l/h]	[gal/h]
100%	1900	395	530	1464	1985	107	28
78%	1750	310	416	1248	1692	81	21
60%	1600	236	317	1041	1411	62	16
45%	1450	179	239	867	1176	47	12
34%	1300	132	178	718	973	36	9
25%	1197	99	133	583	790	27	7

Average Fuel Consumption on ISO 8178 Cycle, Mode E3 : 19.0 gal/h, 71.8 l/h

S6A3-Y2MPTK

TIER 2 REPLACEMENT

483hp @ 1840rpm

LOAD	Speed [rpm]	Output		Torque		Fuel Consumption	
		[kW]	[hp]	[lb.ft]	[N.m]	[l/h]	[gal/h]
100%	1840	360	483	1378	1868	1001	26
86%	1750	310	416	1248	1692	84	22
66%	1600	238	318	1045	1417	62	16
49%	1450	178	238	862	1169	45	12
37%	1300	133	178	718	973	34	9
28%	1200	102	136	596	808	27	7

Average Fuel Consumption on ISO 8178 Cycle, Mode E3 : 17.5 gal/h, 66.3 l/h

S6A3-Y3MPTK-5

TIER 3

543hp @ 1840rpm

LOAD	Speed [rpm]	Output		Torque		Fuel Consumption	
		[kW]	[hp]	[lb.ft]	[N.m]	[l/h]	[gal/h]
100%	1840	405	543	1550	2101	117	31
82%	1740	342	459	1386	1878	94	25
71%	1640	286	384	1230	1667	76	20
59%	1540	237	318	1085	1470	62	16
48%	1440	194	260	948	1286	50	13
39%	1340	157	210	823	1116	40	10
31%	1240	124	166	703	953	32	8
24%	1140	96	129	594	806	25	6

Average Fuel Consumption on ISO 8178 Cycle, Mode E3 : 20.2 gal/h, 76.4 l/h



LOUISIANA
74257 Highway 25
Covington, LA 70435
985-892-0107

TEXAS
905 W 13th Street
Deer Park, TX 77536
281-247-8925

KENTUCKY
3000 Irvin Cobb Drive
Paducah, KY 42003
270-845-3680



labordeproducts.com