

S6R SERIES

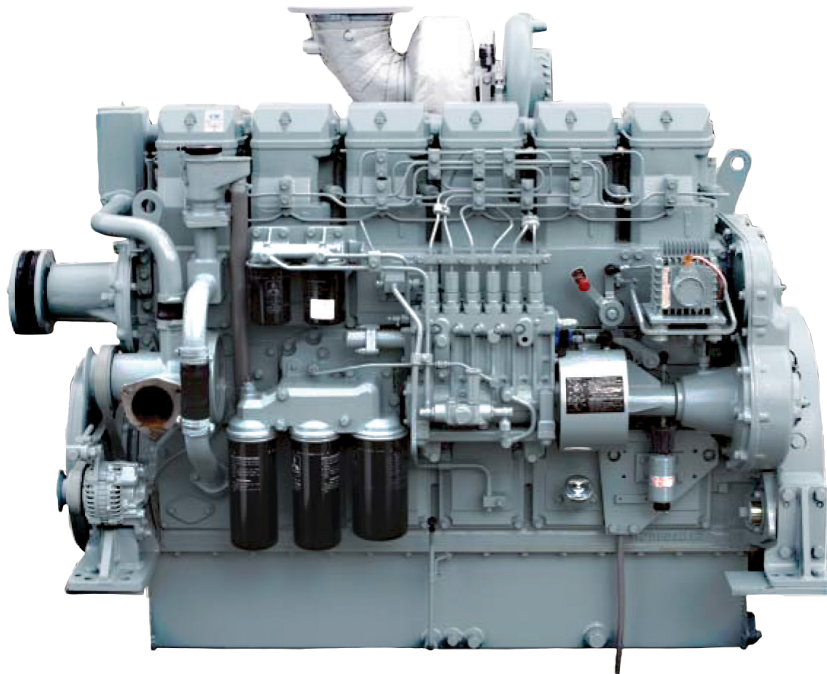
6-cylinder, 4-cycle, mechanical controlled, water cooled, turbocharged, direct injection diesel engine

BORE/STROKE 6.7in x 7.1in
(170mm x 180mm)

DISPLACEMENT 24.51L
(1,496 cu in)

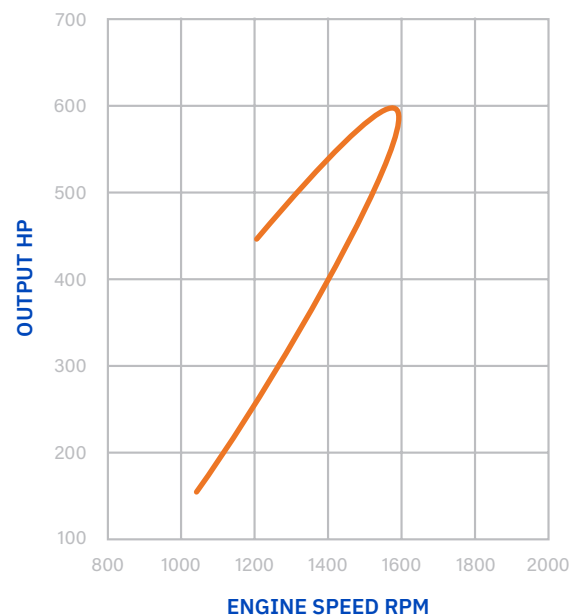
DIMENSIONS 71in (1,811mm) length
44in (1,108mm) width
64in (1,614mm) height

WEIGHT (DRY) 6,239lbs (2,830kg)



The S6R engine is designed for durability, reliability, and efficiency.

Laborde Products is a proud distributor for Mitsubishi Marine Engines and is happy to provide the marine markets with a simple and fully mechanical engine. These engines were constructed with superior engineering to maintain the mechanical nature of its design and a commitment to keeping the power in the US mariners' hands, not the computers.



LOUISIANA
74257 Highway 25
Covington, LA 70435
985-892-0107

TEXAS
313 Deerwood Glen Drive
Deer Park, TX 77536
281-247-8925



labordeproducts.com

S6R SERIES

S6R-Y1MPTAW-3

TIER 1 REPLACEMENT
590 HP @ 1600 RPM

LOAD	Speed [rpm]	Output [kW]	Output [hp]	Torque [lb.ft]	Torque [N.m]	Fuel Consumption [l/h]	Fuel Consumption [gal/h]
100%	1600	440	590	1937	2626	112	29
82%	1500	359	481	1685	2285	91	24
67%	1400	294	394	1477	2003	75	19
53%	1300	233	313	1263	1712	60	15
38%	1150	168	225	1028	1393	44	11
25%	1008	110	148	769	1042	30	7

Average Fuel Consumption on ISO 8178 Cycle, Mode E3 : 20.4 gal/h, 77.3 l/h

S6R-Y2MPTK-3

TIER 2 REPLACEMENT
630 HP @ 1600 RPM

LOAD	Speed [rpm]	Output [kW]	Output [hp]	Torque [lb.ft]	Torque [N.m]	Fuel Consumption [l/h]	Fuel Consumption [gal/h]
100%	1600	470	630	2069	2805	126	33
82%	1500	388	520	1820	2467	99	26
66%	1400	313	419	1572	2132	78	20
54%	1300	253	339	1371	1859	63	16
43%	1200	200	268	1174	1592	50	13
34%	1100	159	214	1020	1384	40	10

Average Fuel Consumption on ISO 8178 Cycle, Mode E3 : 21.9 gal/h, 82.9 l/h

S6R-Y3MPTAW-4

TIER 3
630 HP @ 1600 RPM

LOAD	Speed [rpm]	Output [kW]	Output [hp]	Torque [lb.ft]	Torque [N.m]	Fuel Consumption [l/h]	Fuel Consumption [gal/h]
100%	1600	470	630	2068	2804	128	33
82%	1500	387	519	1817	2464	100	26
67%	1400	315	422	1583	2146	79	21
54%	1300	252	338	1366	1851	63	16
42%	1200	198	266	1164	1578	50	13
33%	1100	153	205	979	1327	39	10
24%	1000	115	154	809	1097	29	7

Average Fuel Consumption on ISO 8178 Cycle, Mode E3 : 22.2 gal/h, 83.9 l/h

S6R-Y3MPTAW-1

TIER 3
684hp @ 1800rpm

LOAD	Speed [rpm]	Output [kW]	Output [hp]	Torque [lb.ft]	Torque [N.m]	Fuel Consumption [l/h]	Fuel Consumption [gal/h]
100%	1800	510	684	1996	2706	144	38
84%	1700	430	576	1780	2413	117	30
70%	1600	358	480	1576	2136	95	25
58%	1500	295	396	1387	1880	77	20
47%	1400	240	322	1208	1638	62	16
38%	1300	192	258	1042	1413	50	13
30%	1200	151	203	889	1205	39	10
23%	1100	116	156	745	1010	30	8

Average Fuel Consumption on ISO 8178 Cycle, Mode E3 : 25.0 gal/h, 94.7 l/h

