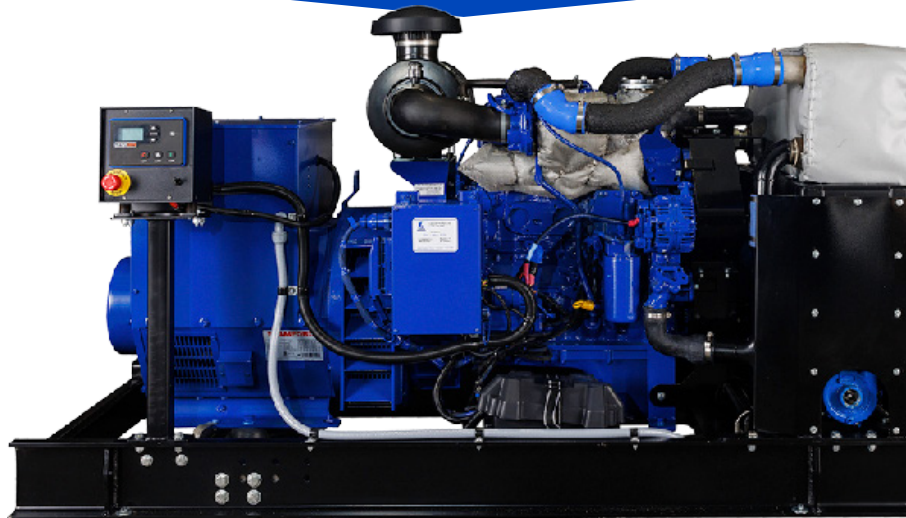


LPI-REP-60 / LPI-REP-60KC GENERATOR (REPLACEMENT ONLY)



Engine NEF45SM2X

Main Characteristics

Standby	60kW
Continuous	53.2kW
Phase	3 Phase
Frequency [Hz]	60 Hz
Current	208.2 / 90.2 A
Voltage	208 / 480 V
RPM	1800
Cylinders	4
Control Panel	Dynagen

Cooling System

Cooling	Liquid
Keel Cooled [BTU/min]	2950
Radiator Cooled	Available

Fuel System

Fuel	No. 2 Diesel	
Starting System	Electric	
Oil Capacity [US Gal]	3.4	
Fuel Consumption [Gal/hr]	1/2 Load	2.72
	3/4 Load	3.8
	Full Load	4.6

Physical Properties

Weight (lbs)	2190 lbs
Dimensions LxWxH (in) (FOOT-PRINT)	70 x 27 x 44



LOUISIANA
74257 Hwy 25
Covington, LA 70435
985.892.0107

TEXAS
905 W 13th St.
Deer Park, TX 77536
281.247.8925

KENTUCKY
3885 Industrial Dr.
Paducah, KY 42001
270.845.3680



labordeproducts.com